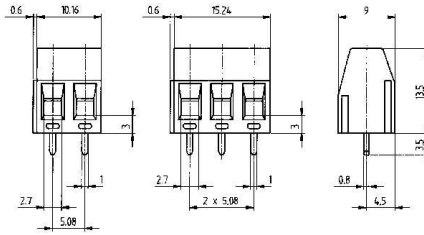


- DE



## PK 35

### PCB terminal block

- 5.08mm pitch
- rising-cage-clamp
- 2 - 12 poles
- 2- and 3-pole modules
- wire entry parallel to PCB

tested according to DIN EN 60998

<b>Rated voltage</b>	250 V
<b>Rated current</b>	24 A
<b>Rated current (ambient temperature)</b>	24 A(T60)
<b>Test voltage</b>	2 kV
<b>Torque</b>	0.5 Nm
<b>Screw size</b>	M3
<b>Rated cross section solid wire</b>	0.5 - 2.5 mm <sup>2</sup>
<b>Rated cross section stranded wire</b>	0.5 - 1.5 mm <sup>2</sup>

tested according to UL1059, CSA22.2No.158

Cross section

Dimensions

Material

Temperatures

Other Data